

### Doodle Postcard

Color a doodle design on a postcard, write a message on the back, and mail it to a friend.

#### You will need:

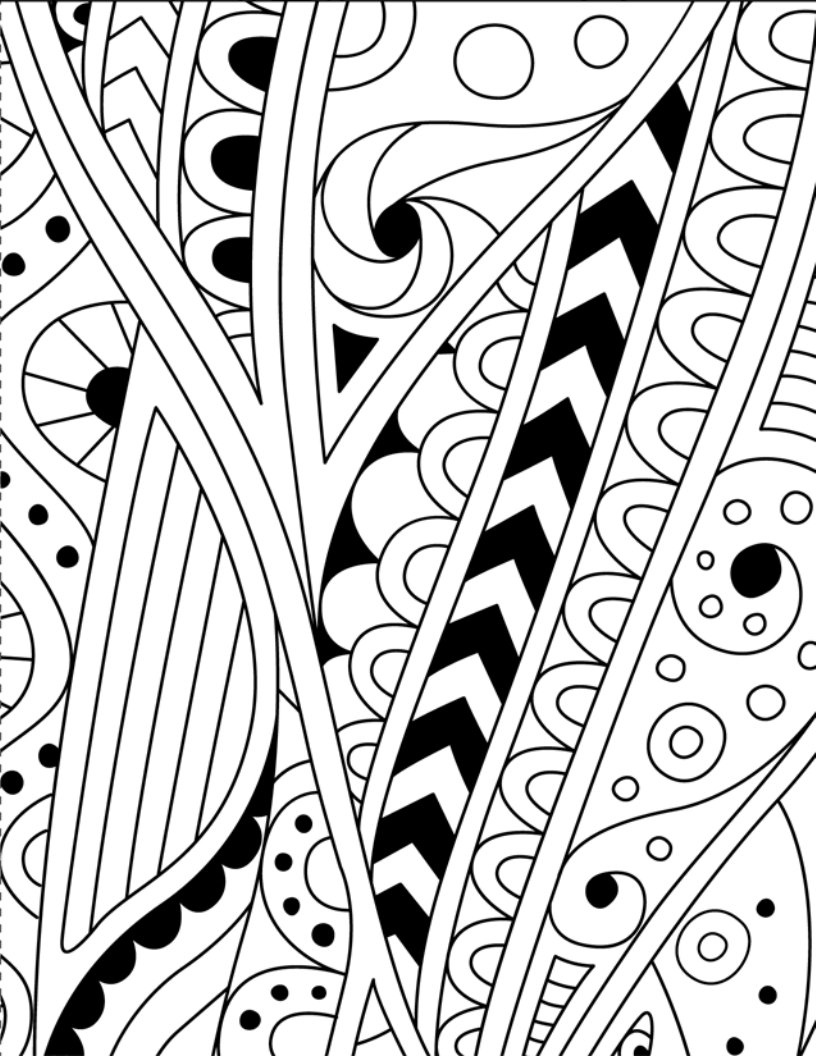
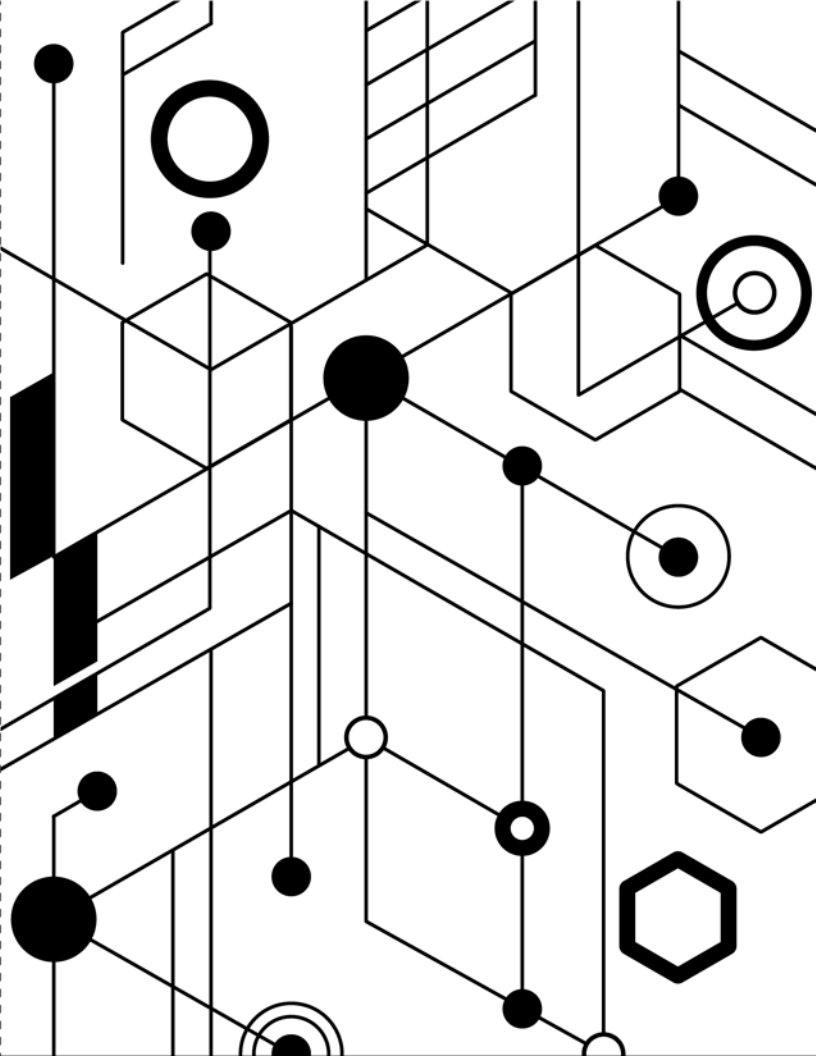
- [Doodle postcard designs](#) printed on white card stock
- Markers or colored pencils
- Glue stick
- Scissors



Print a picture of a completed [Doodle Postcard](#) to create interest in this project.

#### Directions:

1. Cut the two postcard designs apart along the solid black line.
  2. Select a design, color it, and then fold it in half along the dashed line.
  3. Glue the front and back together using the glue stick.
  4. Write a message on your postcard and mail it to a friend.
-



\_\_\_\_\_  
\_\_\_\_\_  
\_\_\_\_\_

PLACE  
STAMP  
HERE

\_\_\_\_\_  
\_\_\_\_\_  
\_\_\_\_\_

\_\_\_\_\_  
\_\_\_\_\_  
\_\_\_\_\_

PLACE  
STAMP  
HERE

\_\_\_\_\_  
\_\_\_\_\_  
\_\_\_\_\_



Doodle Postcard